



Massachusetts Health Policy Forum

Lindsey Tucker
Associate Commissioner
Massachusetts Department of Public Health
Wednesday, January 6, 2021



Baker-Polito Administration



Governor Charlie
Baker &
Lieutenant
Governor Karyn
Polito



Health and Human
Services Secretary
Marylou Sudders



Department of
Public Health
Commissioner
Monica Bharel



About DPH



1799

History of department dates to Paul Revere



8 Bureaus, 6 Office

DPH covers a range of issues from birth until death



15 sites, 3000 employees \$1 billion

DPH is located across the Commonwealth, and partners with local boards of health

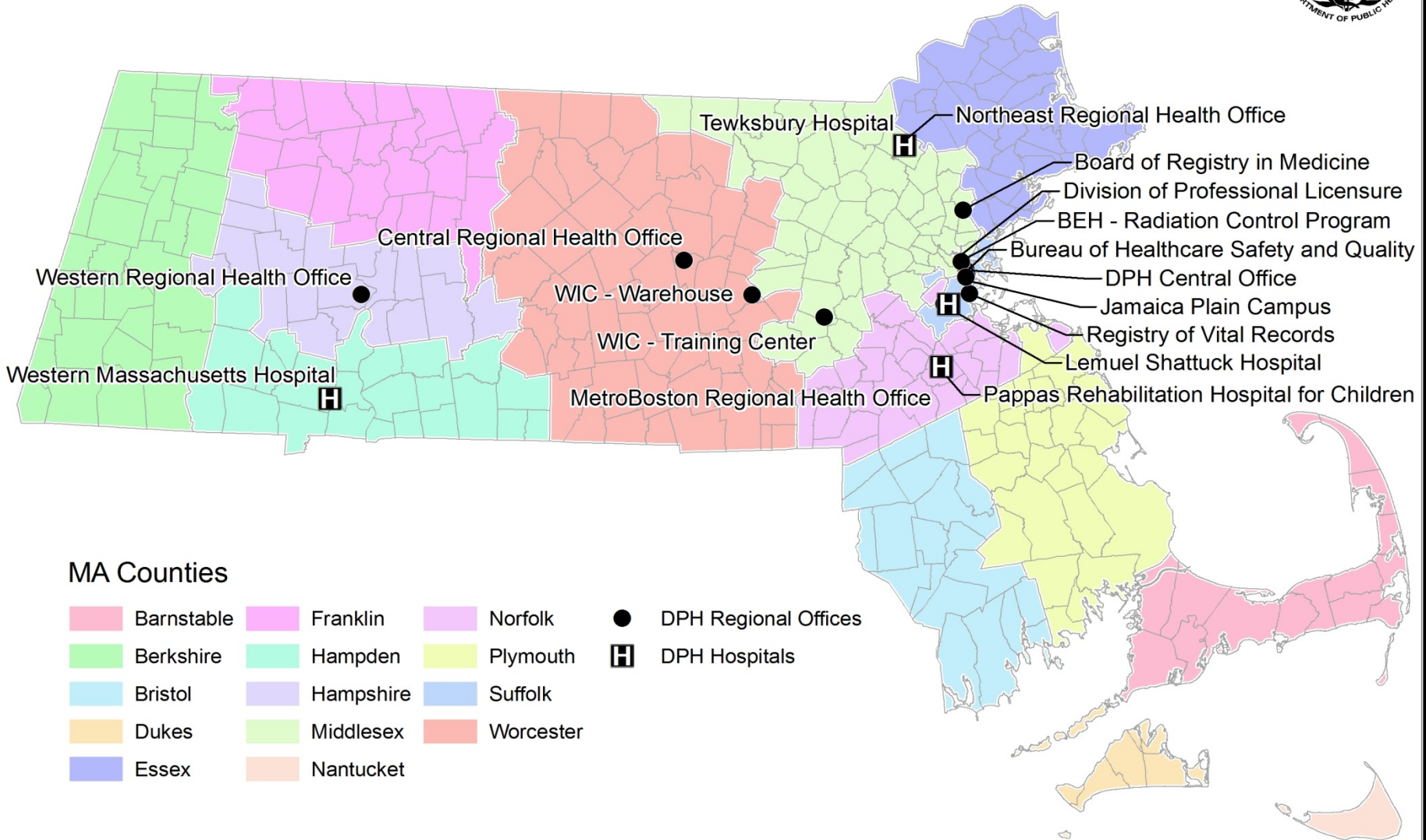


Annual budget, comprised of federal, state, and grant funding



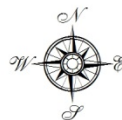
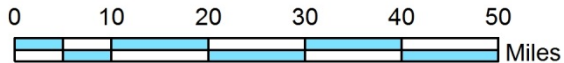
Prevention and Wellness – Health Access – Nutrition – Perinatal and Early Childhood – Adult Treatment – Data Analytics and Support – Housing and Homelessness – Violence and Injury Prevention – Office of Statistics and Evaluation – Childhood Lead Poisoning Prevention – Community Sanitation – Drug Control – Occupational Health Surveillance – PWTF – SANE Program – Interagency Initiatives – Planning and Development – Prevention – Problem Gaming – Quality Assurance and Licensing – Youth and Young Adults – Early Intervention – Children and Youth with Special Needs – Epidemiology Program – Immunization Program – Global Populations and Infectious Disease Prevention – STI Prevention – HIV/AIDS – Integrated Surveillance and Informatics Services – Clinical Microbiology Lab – Chemical Threat, Environment and Chemistry Lab – Childhood Lead Screening – Environmental Microbiology and Molecular Foodborne Lab – STD/HIV Laboratories – Biological Threat Response Lab – Central Services and Informatics – Quality Assurance – Safety and Training – Health Care Certification and Licensure – Health Professional Licensure – Office of Emergency Medical Services – DoN – Medical Use of Marijuana – Shattuck Hospital – Mass Hospital School – Tewksbury Hospital – Western MA Hospital – State Office of Pharmacy Services – Office of Local and Regional Health – Office of Health Equity – Accreditation and Performance Management – ODMOA – OPEM – HR and Diversity – Office of General Counsel – Office of CFO – Commissioner’s Office

Massachusetts Department of Public Health Regional Offices & Hospitals



MA Counties

- | | | | |
|--|---|---|--|
|  Barnstable |  Franklin |  Norfolk |  DPH Regional Offices |
|  Berkshire |  Hampden |  Plymouth |  DPH Hospitals |
|  Bristol |  Hampshire |  Suffolk | |
|  Dukes |  Middlesex |  Worcester | |
|  Essex |  Nantucket | | |





Massachusetts DPH will continue to be a **national leader** in innovative, outcomes-focused public health based on a **data-driven** approach, with a focus on **quality public health and health care services** and an emphasis on the social determinants and **eradication of health inequities**.



VISION

Optimal health and well-being for all people in Massachusetts, supported by a strong public health infrastructure and healthcare delivery.

MISSION

The mission of the Massachusetts Department of Public Health (DPH) is to prevent illness, injury, and premature death; to ensure access to high quality public health and health care services; and to promote wellness and health equity for *all* people in the Commonwealth.

DATA

We provide relevant, timely access to data for DPH, researchers, press and the general public in an effective manner in order to target disparities and impact outcomes.

DETERMINANTS

We focus on the social determinants of health - the conditions in which people are born, grow, live, work and age, which contribute to health inequities.

DISPARITIES

We consistently recognize and strive to eliminate health disparities amongst populations in Massachusetts, wherever they may exist.

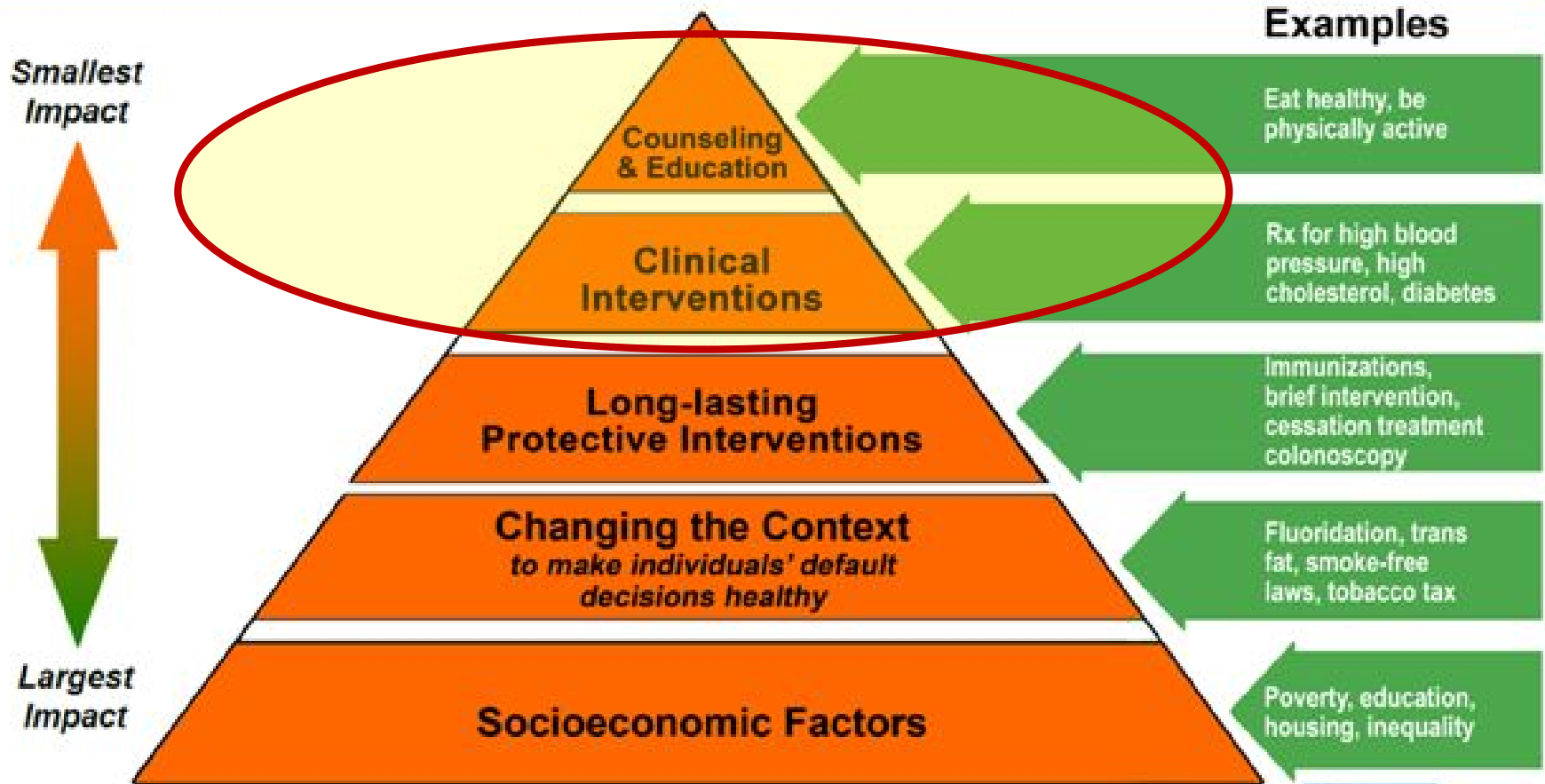
EVERYDAY EXCELLENCE

PASSION AND INNOVATION

INCLUSIVENESS AND COLLABORATION

CDC Health Impact Pyramid

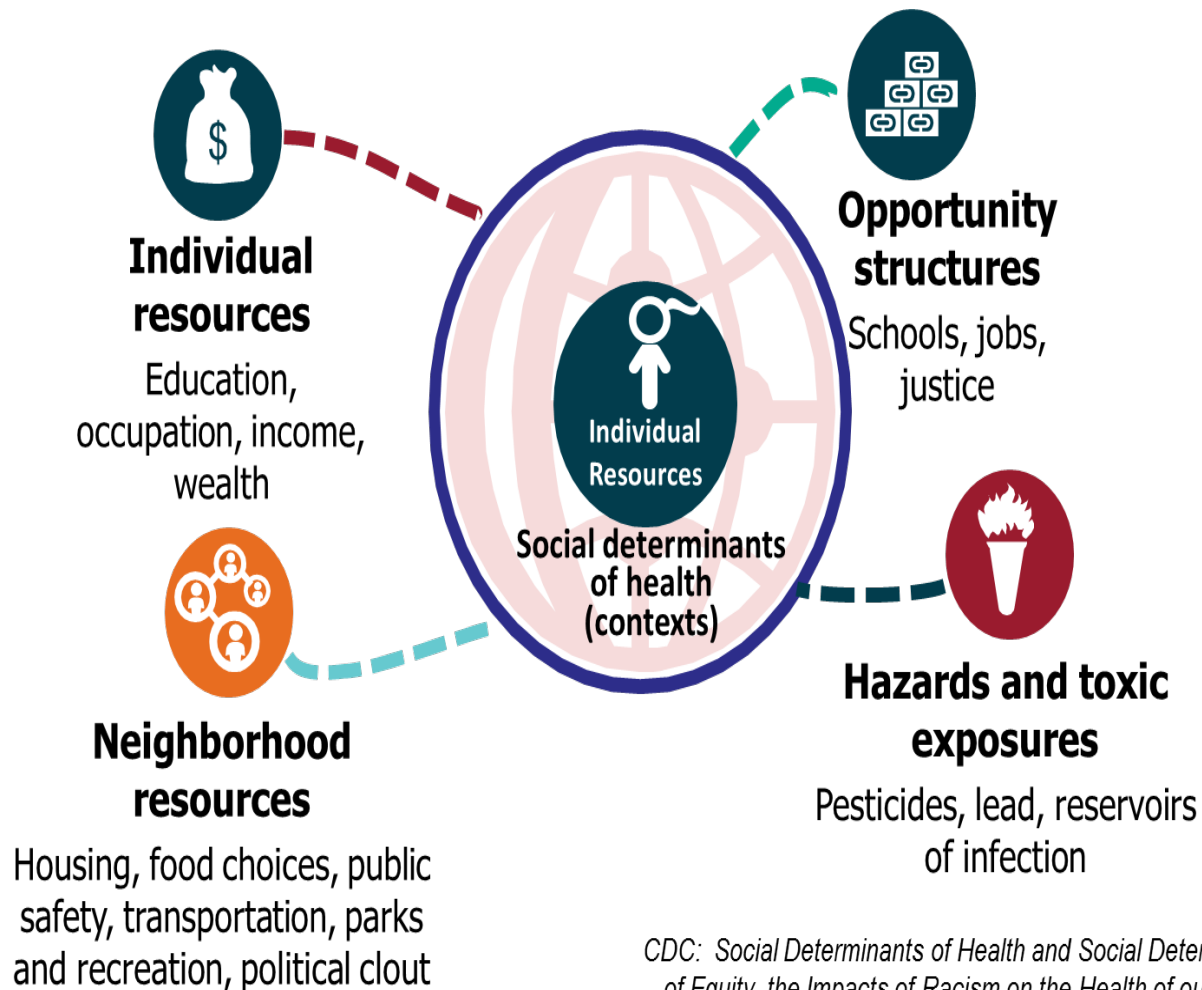
Factors that Affect Health



Check the Tarrant County Public Health Web site to learn more.
<http://health.tarrantcounty.com>



Social Determinants

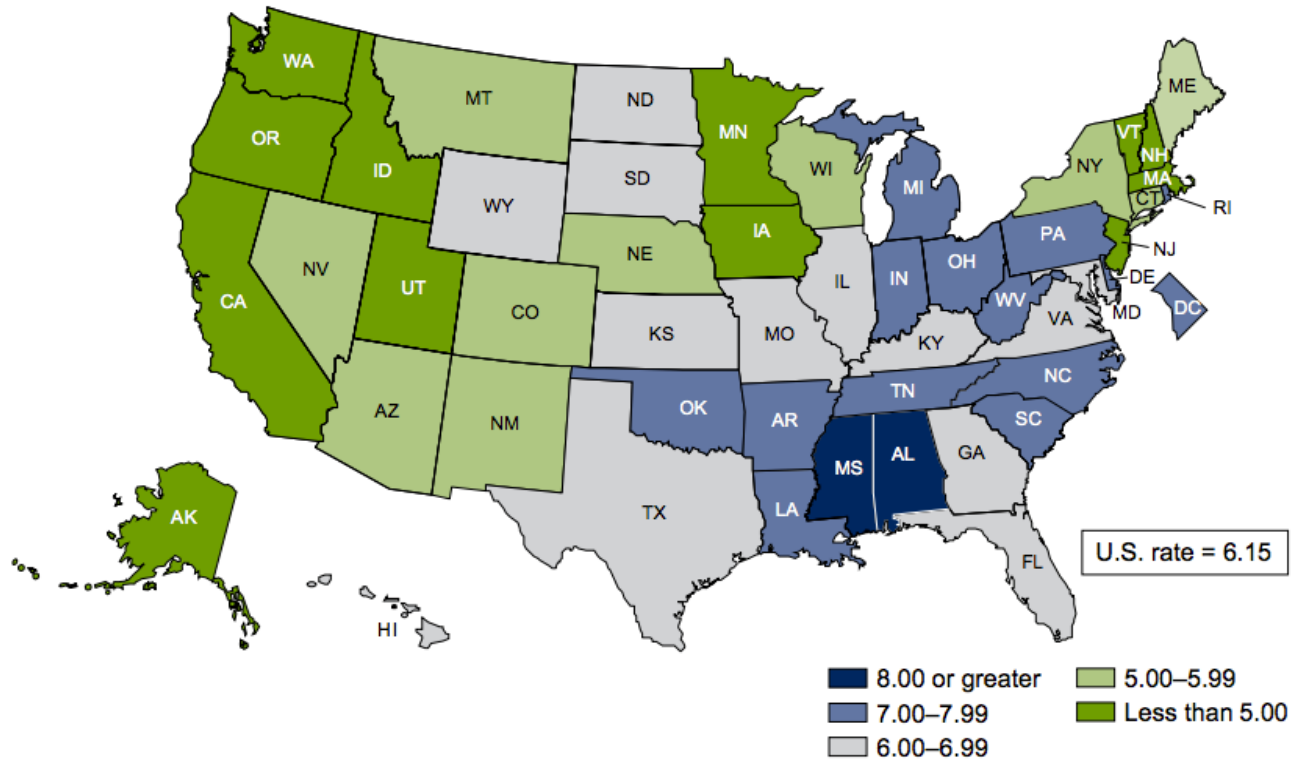


CDC: Social Determinants of Health and Social Determinants of Equity, the Impacts of Racism on the Health of our Nation



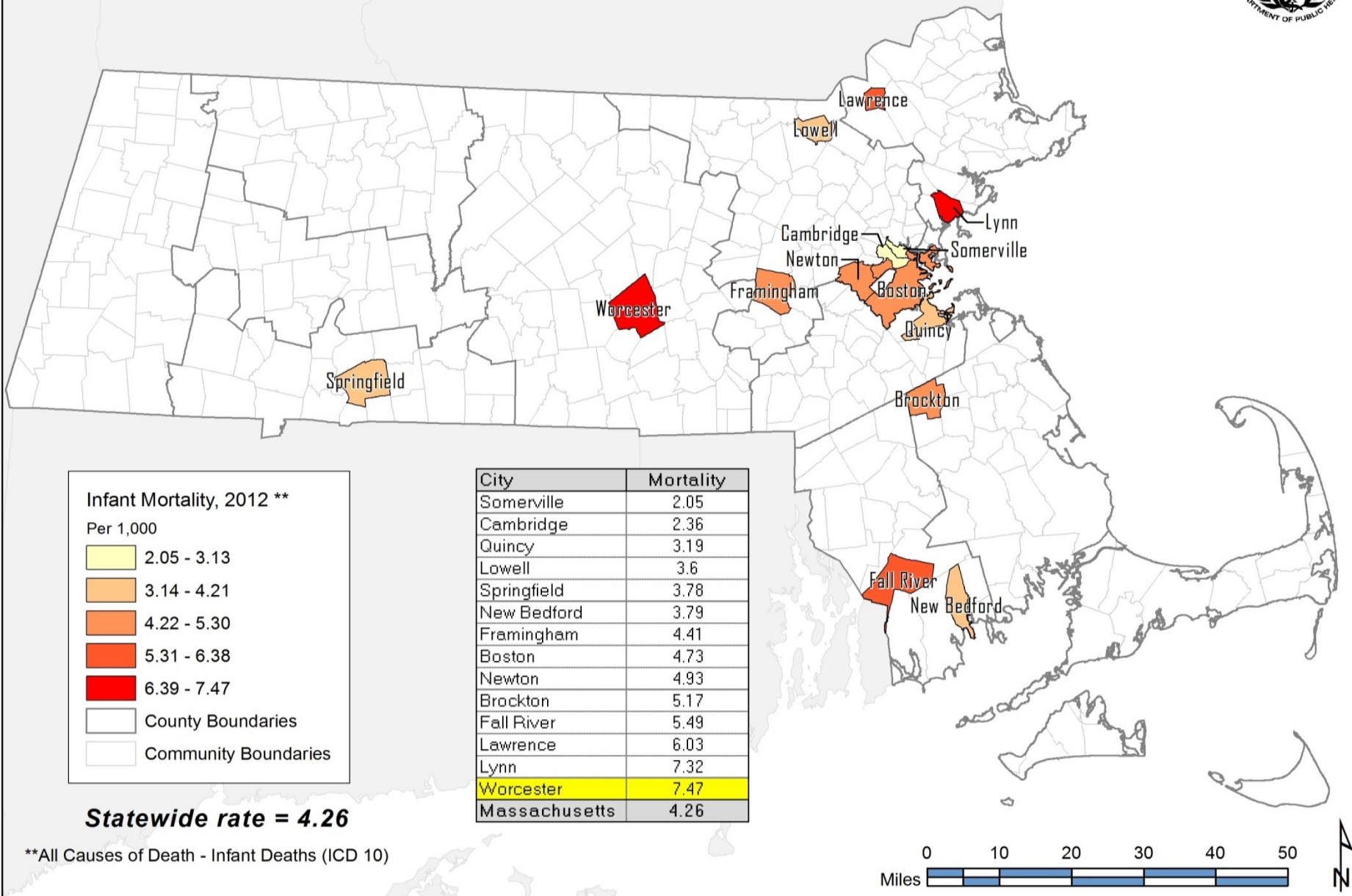
A FOCUS ON HEALTH EQUITY

U.S. Infant Mortality Rate 2011



Infant Mortality Rates in Massachusetts' Largest Cities

2012



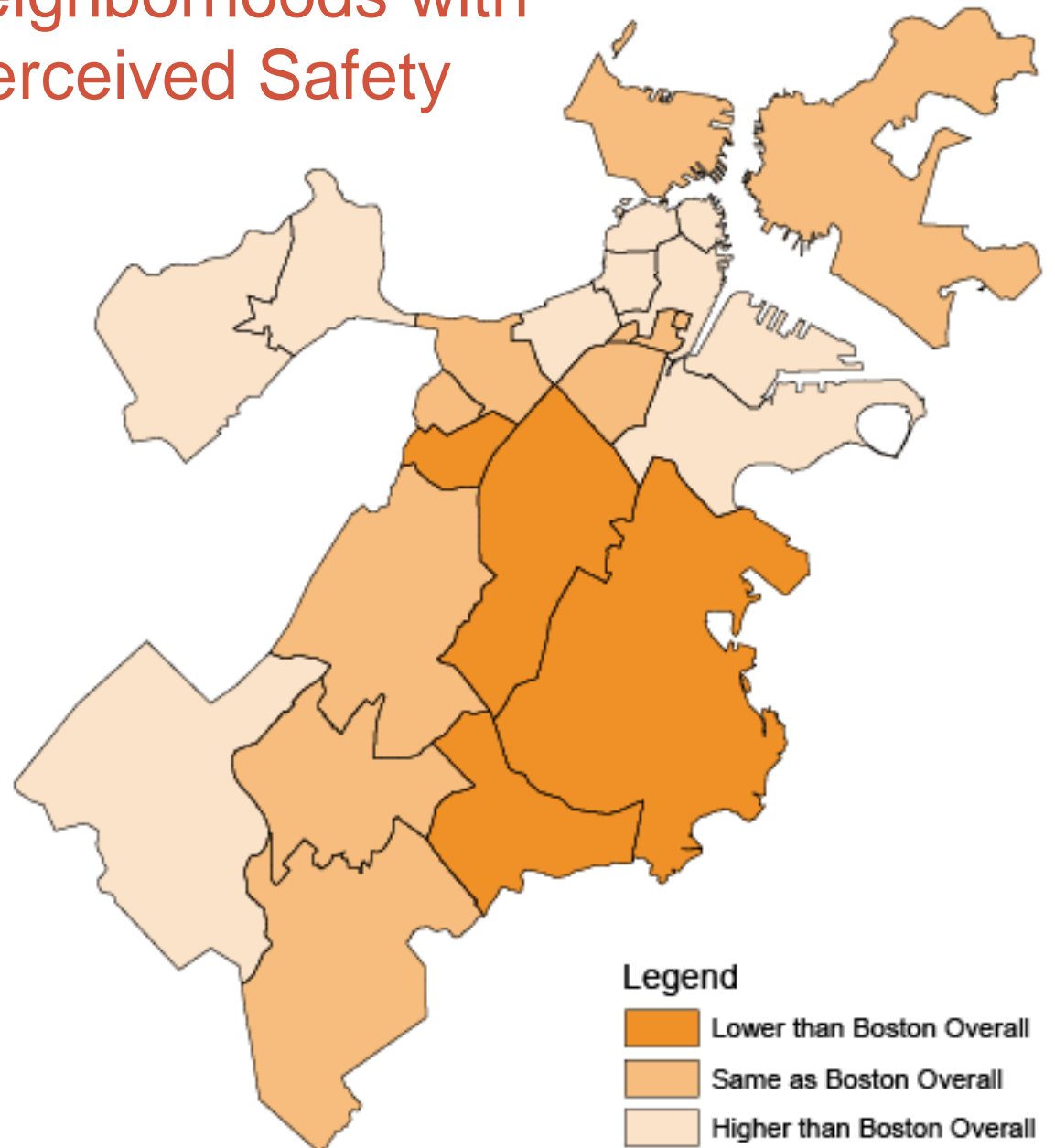
**All Causes of Death - Infant Deaths (ICD 10)

Boston Neighborhoods with High Rates of Chronic Disease Hospitalizations



*2012 CHIA Hospital Discharge Data, age adjusted

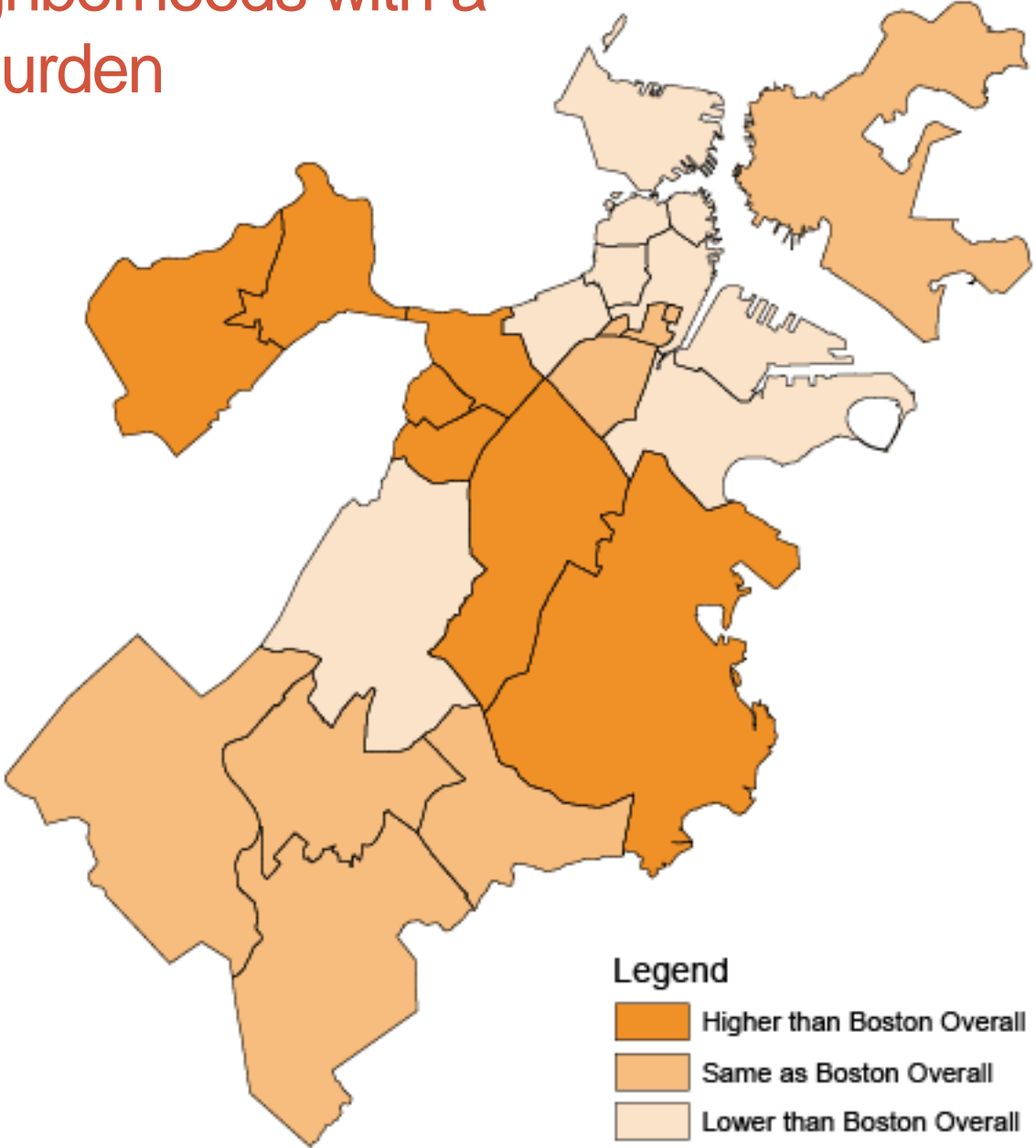
Boston Neighborhoods with Poor Perceived Safety



Legend
Lower than Boston Overall
Same as Boston Overall
Higher than Boston Overall

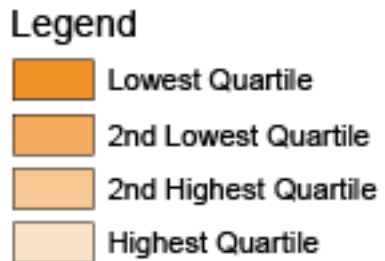
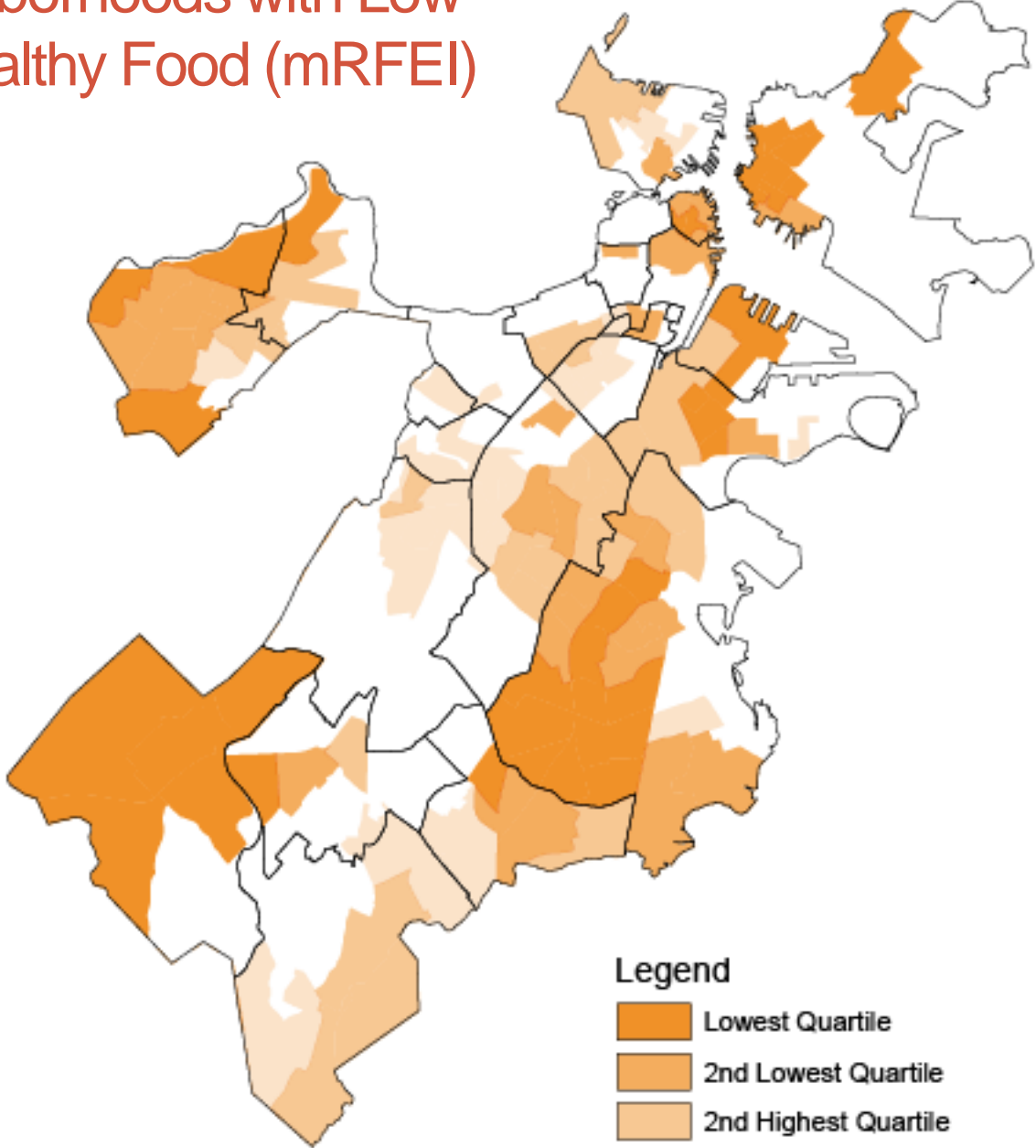
*Boston Neighborhood Survey (BNS), 2008; Harvard Youth Prevention Center through Cooperative agreement with the CDC

Boston Neighborhoods with a High Rent Burden



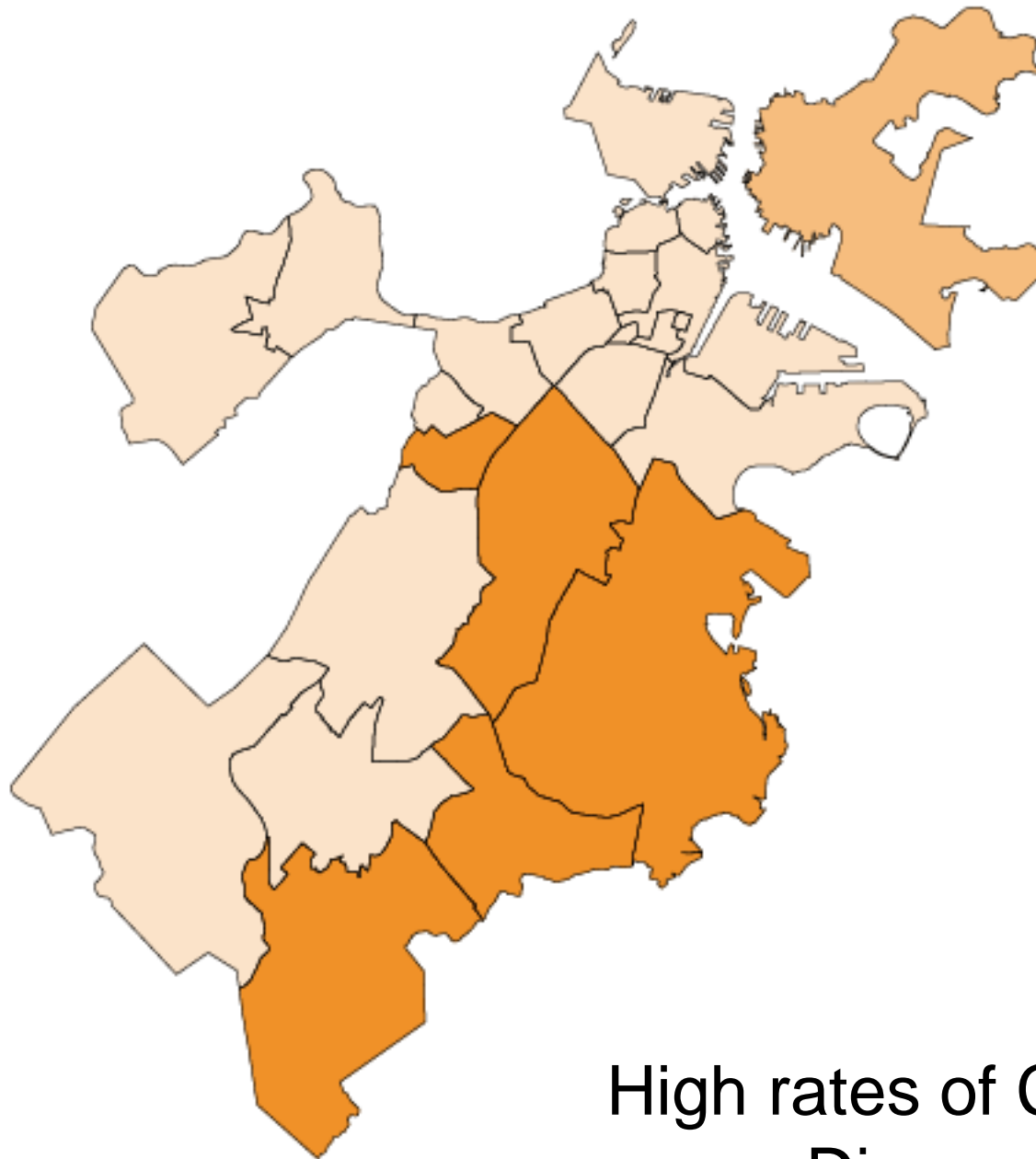
* American Community Survey, 2008-2012, US Census Bureau

Boston Neighborhoods with Low Access to Healthy Food (mRFEI)

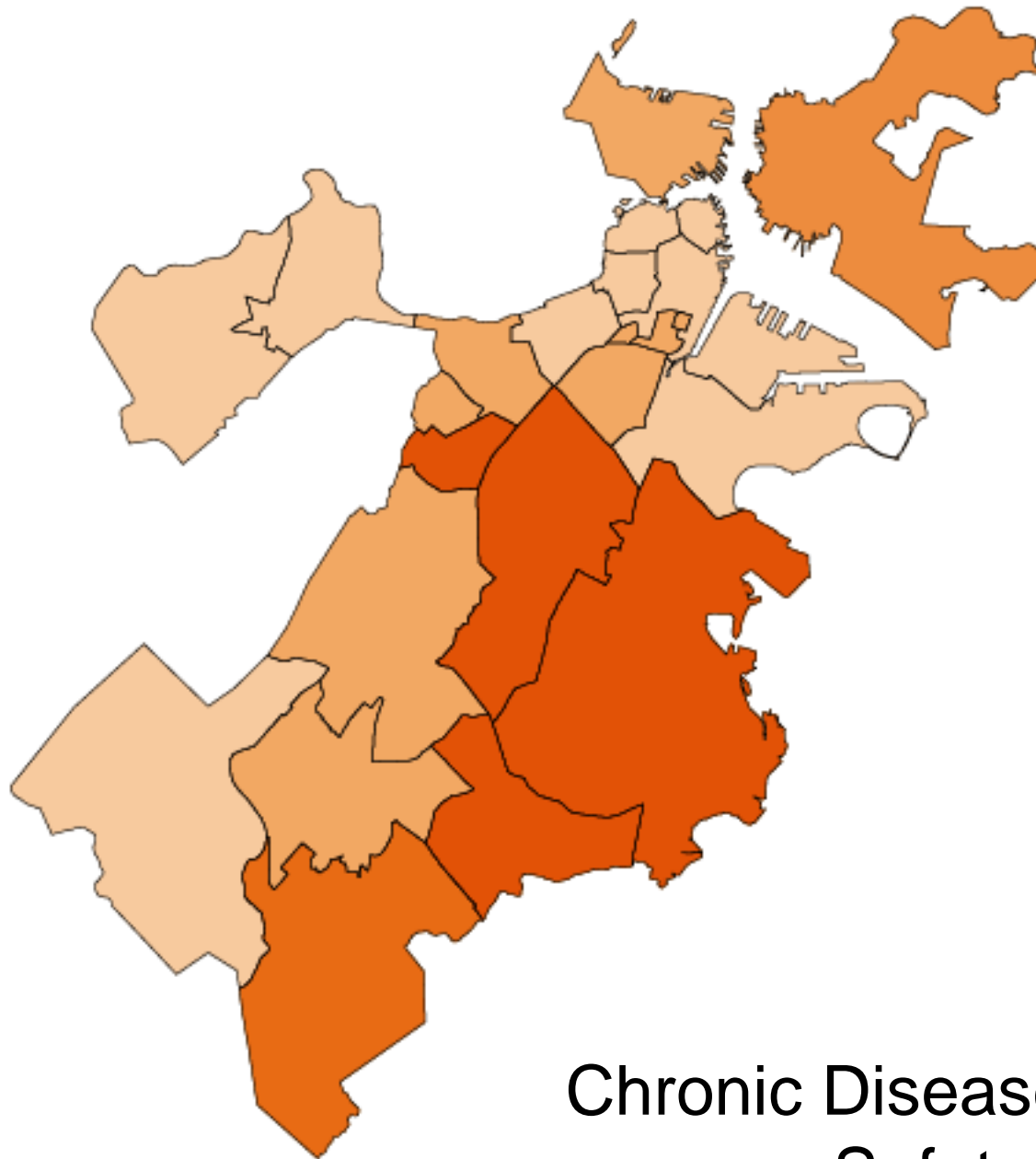


* Modified Retail Food Environment Index, CDC

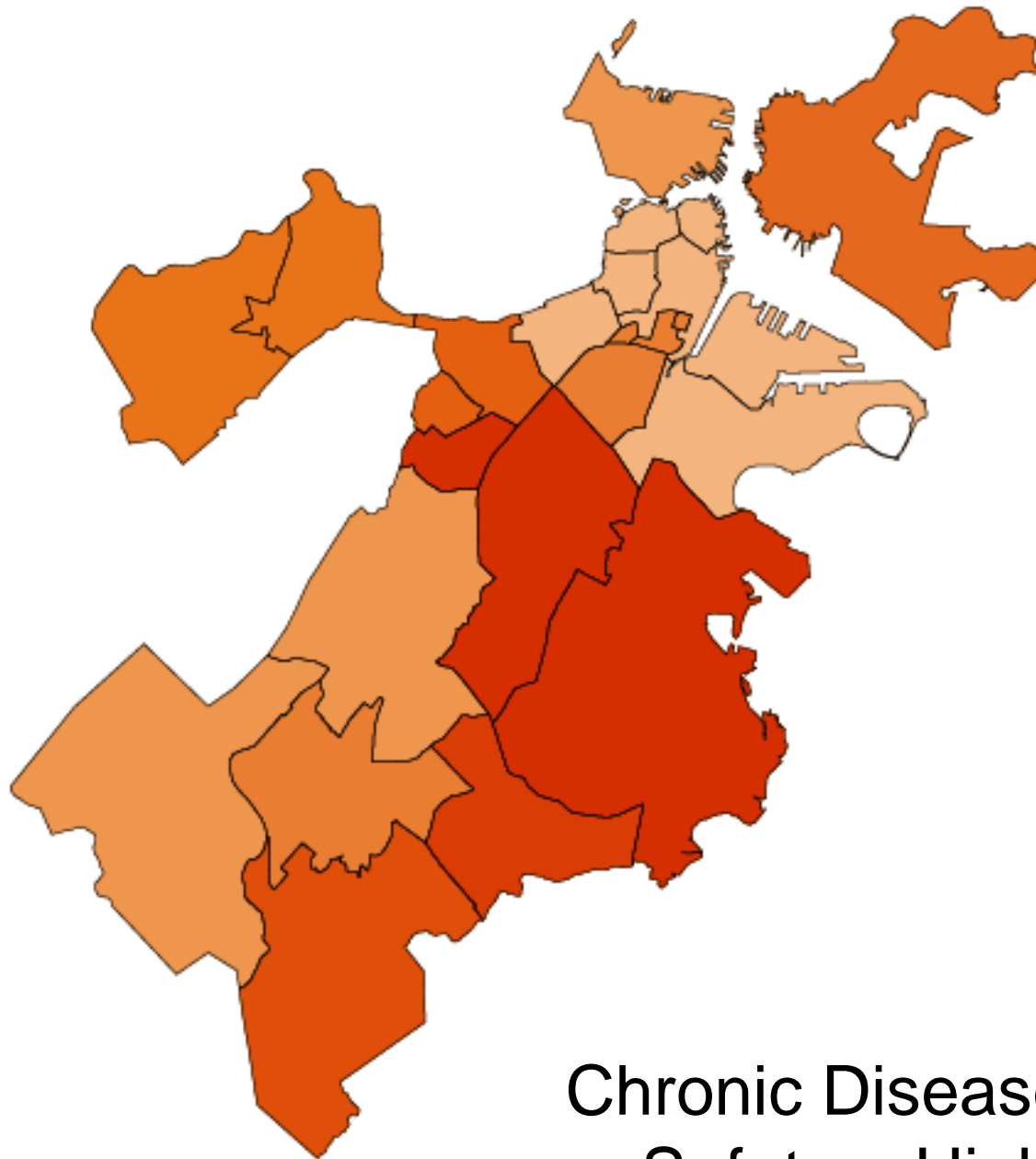
But put them all together
and...



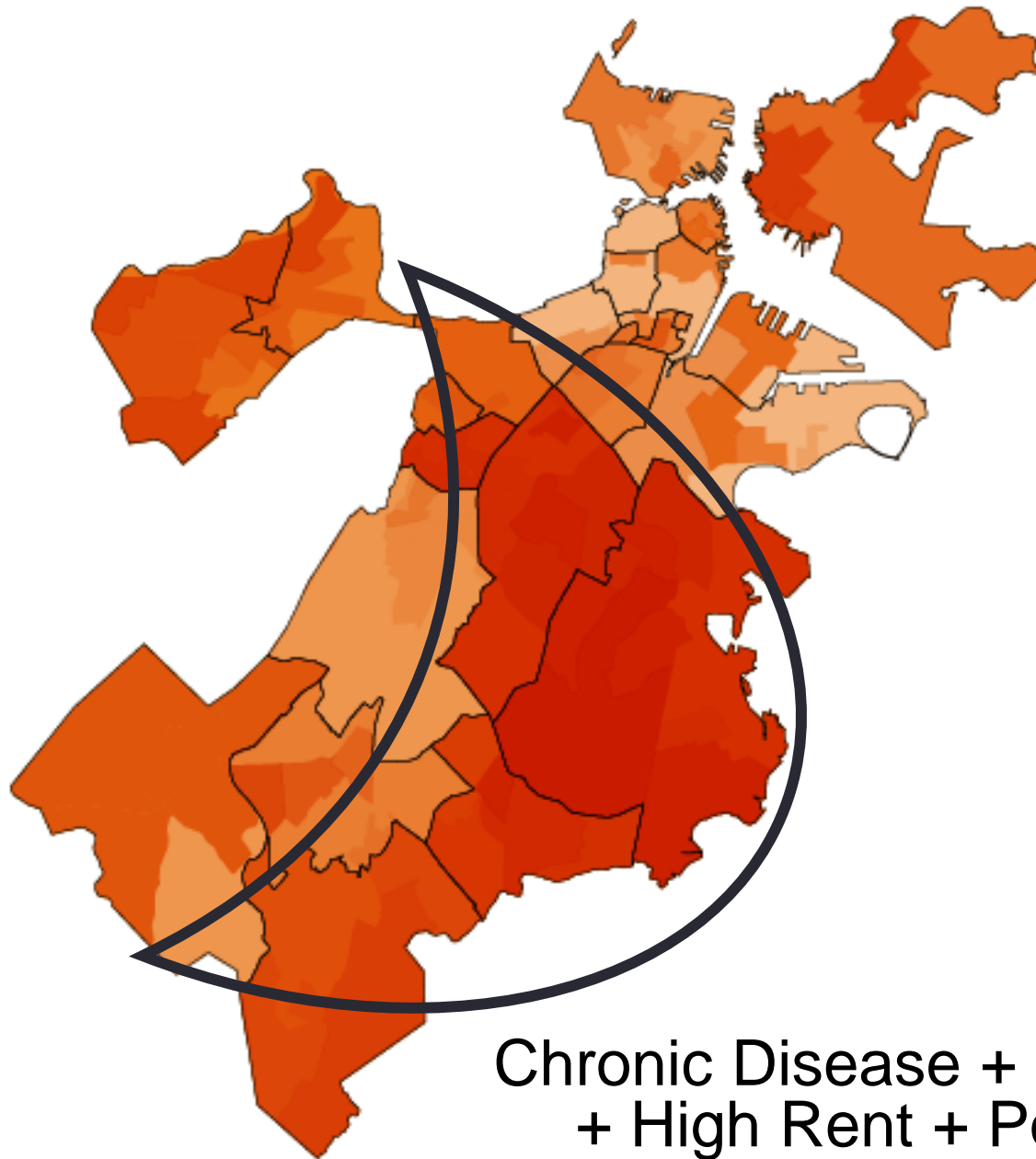
High rates of Chronic Disease



Chronic Disease + Poor
Safety



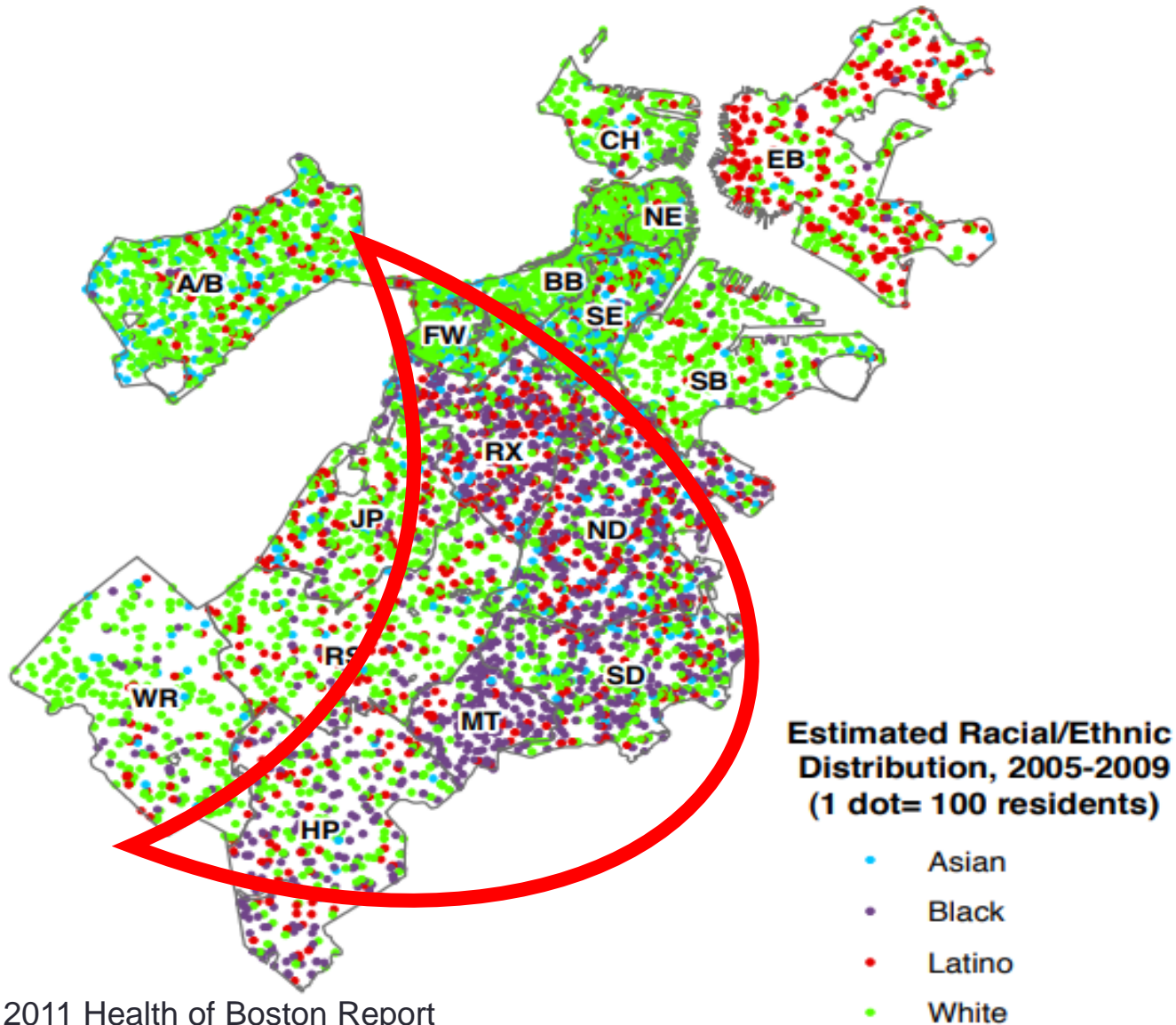
Chronic Disease + Poor
Safety + High Rent



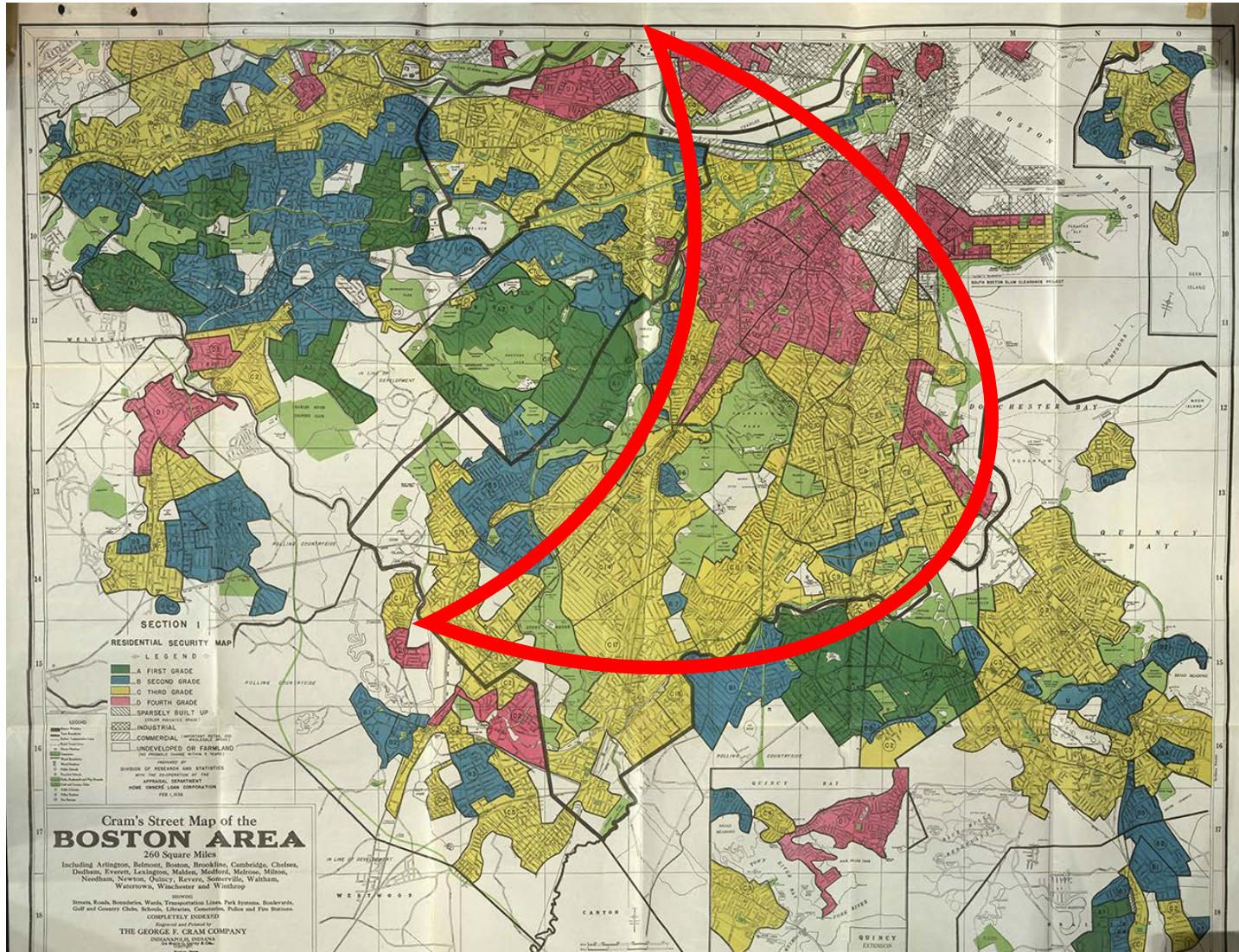
Chronic Disease + Poor Safety
+ High Rent + Poor Food
Access

What else is going on in “the crescent” ...

Place Matters



Redlining of Boston Neighborhoods





COVID-19 HEALTH EQUITY ADVISORY GROUP

[COVID-19 Health Equity Advisory Group | Mass.gov](https://www.mass.gov/info-details/covid-19-health-equity-advisory-group)



Connect with DPH



@MassDPH



Massachusetts Department of
Public Health



DPH blog

<https://blog.mass.gov/publichealth>



www.mass.gov/dph